

NAHF Library

A vast collection of materials on East Asian history in one place

<http://hflib.kr>

- A library focused on East Asian history and territory serving those interested in resources from various countries around the world that cover the history, diplomacy, territorial and maritime issues surrounding East Asia and Dokdo
- A collection of approximately 100,000 books and periodicals related to the history of Korea, China, and Japan, their diplomatic relations, Japanese military "comfort women", Dokdo, and the East Sea

- **Hours** : 09:00-18:00 Closed on Saturdays, Sundays, Public Holidays
- **Address** : 1F, Nonghyup Life Insurance Bldg, 81 Tongil-ro, Seodaemun-gu, Seoul, Korea (03739)



NAHF Library QR Code



Meeting Dokdo in Seoul

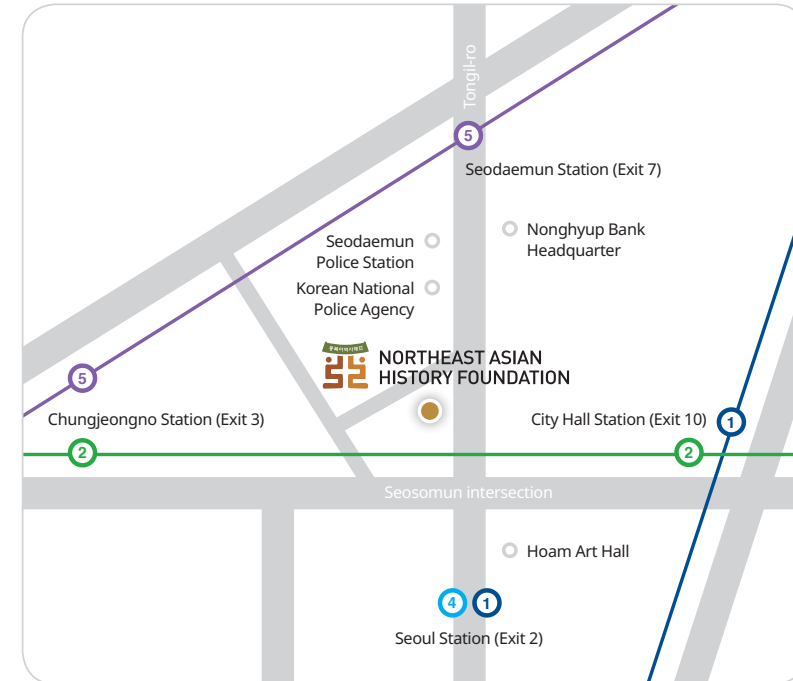
<http://dokdomuseumseoul.com>

- A museum run by the NAHF that provides comprehensive, engaging activities to foster a proper understanding of Dokdo in future generations.

- **Hours** : 10:00-17:00 Closed on Mondays, National Holidays
- **Address** : B1, Nonghyup Life Insurance Bldg, 81 Tongil-ro, Seodaemun-gu, Seoul, Korea (03739)



Dokdo Museum Seoul QR Code



Directions

Northeast Asian History Foundation

Address_ Nonghyup Life Insurance Bldg, 81 Tongil-ro, Seodaemun-gu, Seoul, Korea (03739)

Telephone_ +82-2-2012-6000 / FAX_ +82-2-2012-6175

Website_ www.nahf.or.kr

YouTube



facebook



NAVER blog



Our mission

Forming the foundation for peace and prosperity in Northeast Asia

Research & Analysis

Research based on objective, balanced perceptions of history

- Correcting incorrect perceptions of Northeast Asia's past through objective, balanced research
- Accurately analyzing comprehensively compiled historical sources.

Policy Development

Analyze and develop policies with an acute awareness of international circumstances

- Conducting projects to gain a precise understanding of international circumstances and formulate ideas for the peaceful Northeast Asian community
- Developing innovative policies that contribute to the successful growth of Northeast Asia

Education & Promotion

Enhance the public understanding of issues involving Northeast Asian history and Dokdo

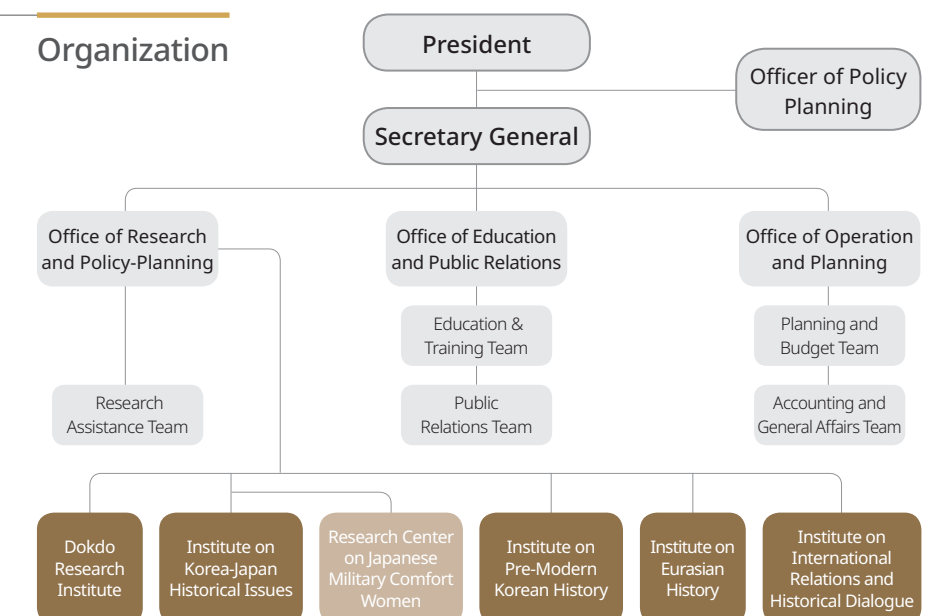
- Offering in-depth education and training to develop historical awareness
- Engaging in organized promotional activities to spread accurate perceptions of history

Exchange & Cooperation

Share research results with the international society through exchange and cooperation

- Sharing research progress through domestic and international exchange
- Engaging in inter-Korean academic cooperation to jointly respond to distortions of Korean history

Organization





Dokdo Research Institute

Conducting research on Dokdo to secure territorial sovereignty and peace in Northeast Asia

The Dokdo Research Institute is in charge of performing research on issues related to Dokdo and developing relevant policies. Additionally, the institute devotes itself to carrying out projects that advocate for the correct naming of Dokdo and the East Sea, thereby enhancing international awareness regarding such issues.

Respond to ongoing issues involving Dokdo / Research Dokdo's modern and contemporary history / Analyze international laws and treaties relevant to Dokdo issues / Establish a unified system to promote issues regarding Dokdo / Promote the Wider use of the names Dokdo and the East Sea / Endeavor for correct naming through online campaigns / Examine the history of naming Dokdo and the East Sea / Develop educational material about Dokdo / Present the Dokdo Research Award

Institute on Korea-Japan Historical Issues

Research possible resolutions for historical issues between Korea and Japan



The Institute on Korea-Japan Historical Issues systematically collects and compiles sources related to historical conflicts between Korea and Japan. While developing high-quality policies to issues related to Japanese aggression in history and the colonial rule of Korea, the Institute additionally engages in related academic exchange.

Compile, compile, and annotate sources related to Korea-Japan historical issues / Research the damage Korea suffered from Japanese aggression and colonial rule / Examine issues related to Japan's forced mobilization and the Yasukuni Shrine / Analyze the history of Korea-Japan relations and international relations in East Asia / Develop policies related to ongoing Korea-Japan historical issues / Engage in academic exchange related to Korea-Japan historical issues

Research Center on Japanese Military Comfort Women

Striving to uncover historical truth and achieve justice

The Research Center on Japanese Military Comfort Women conducts research and collects source material related to the issue of the Japanese military "comfort women" in order to discover possible resolutions based on human rights and historical justice.



Research damages sustained by comfort women / Compile and annotate original material related to comfort women / Scrutinize controversial aspects of the comfort women system / Inspect the realities of comfort stations / Analyze statements by Japanese military war criminals / Inspect investigations related to the repatriation of comfort women / Host academic conferences on comfort women-related issues

Institute on Pre-modern Korean History

Responding to distorted claims made by surrounding countries and establishing Ancient Korean history within the context of world history

The Research Institute on Pre-modern Korean History organizes literature and archaeological sources related to Ancient and Medieval Korean history. By researching such material, the Institute publishes books covering the overall history of Korea, thus responding to the distortions of ancient Korean history developed by nearby nations as well as establishing ancient Korean history within the context of world history.

Collect and translate sources related to ancient Korean history / Analyze sources related to Korea's premodern relations with other East Asian countries / Periodically books on Ancient and Medieval Korean history / Investigate Ancient Korean remains and relics / Research sources related to Balhae and other Ancient Korean Kingdom



Institute on Eurasian History

Researching the history of the northern regions of Northeast Asia to broaden the horizon of historical research

The Institute on Eurasian History covers a broad range of research topics involving the past, peoples, and Korean diaspora of the frontier areas near Mount Baekdu as well as Manchuria, Primorye, and central Asia in order to suggest new perspectives of analyzing the history of the northern regions.

Research the Mount Baekdu area / Archaeological examination of the northern regions / Conduct an in-depth analysis of the norther regions' history and people / Collect sources related to the northern regions' history / Assess prehistoric cultures of central Asia / Study the frontier areas in the northern regions / Inspect the history and society of Korean diaspora

Institute on International Relations and Historical Dialogue

Striving for historical reconciliation and mutual understanding in Northeast Asia

The Institute on International Relations and Historical Dialogue seeks ways to bridge the gap between perceptions of history which are causing conflicts in Korea's relations with China and Japan so that the three countries may cooperate in achieving historical reconciliation and contribute together to bring mutual prosperity and peace to Northeast Asia.

Engage in academic exchange on historical issues between Korea and China and East Asian international relations / Analyze China and Japan's textbooks on East Asian history / Examine theories and case studies on historical conflicts and reconciliations / Assess China's globalization strategy / Inspect issues related to contemporary East Asian history and regional order / Explore theories and narratives on East Asian history / Investigate the history of modern East Asia and relevant policies / Host Korea-China, Korea-Japan Academic Forums / Arrange the Research Forum on East Asian History

Education-Exchange

Leading in the accurate presentation of Northeast Asian history through education and exchange

Education - Sponsor the "Defending Dokdo Schools" program and off-site lectures on Korean history and Dokdo / Host off-site exhibitions and create permanent exhibition spaces featuring Dokdo / Provide training for teachers on East Asian history and Dokdo / Cater history education for Koreans and foreigners

Exchange & Cooperation - Conduct academic exchange projects with foreign institutions, scholars, and educators / Support Korean NGO activities involving historical issues, Dokdo, and the East Sea / Support and exchange with foreign NGOs

Academic Journals

• 「Dongbuga yeoksa nonchong」 (Indexed by KCI)



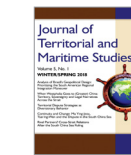
Quarterly publication

• 「Territory and Seas」 (Candidate of KCI)



Biannual publication

• 「Journal of Territorial and Maritime Studies」 (JTMS)



Biannual publication

• 「The Journal of Northeast Asian History」 (JNAH)



Biannual publication



History: Forming memories for a better tomorrow

<http://contents.nahf.or.kr>

- Online library providing various primary sources related to historical issues
- Content introducing East Asian historical issues conveniently arranged by theme
- Educational content for learning about East Asian history and historical topics
- Translations of material covering historical matters (English, Japanese, Chinese)



Northeast Asian History Network QR Code